

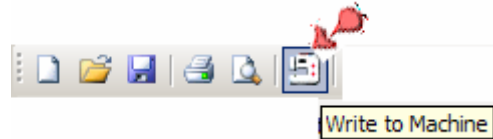
Lesson # 5 Sewing Out the design.

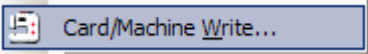
Level: Editor Plus and Designer Plus

Open your Bernina artista software and open design **CJ530** as you did in lesson #4.

The design is on the screen so how do I send a design to my Bernina embroidery system to stitch?

The most simple way to open the dialogue box that will send your design to the embroidery system is to click the little sewing machine icon on the general toolbar. Locate on your design screen the box that is indicated by the red arrow at the right. When you rest your mouse on the box, another box will show telling you what the icon (tool, box) will do. In this case, it says "Write to Machine". Left click the icon.



The second way to start the process of writing a design to the embroidery unit is to go to File> Card/Machine Write... 

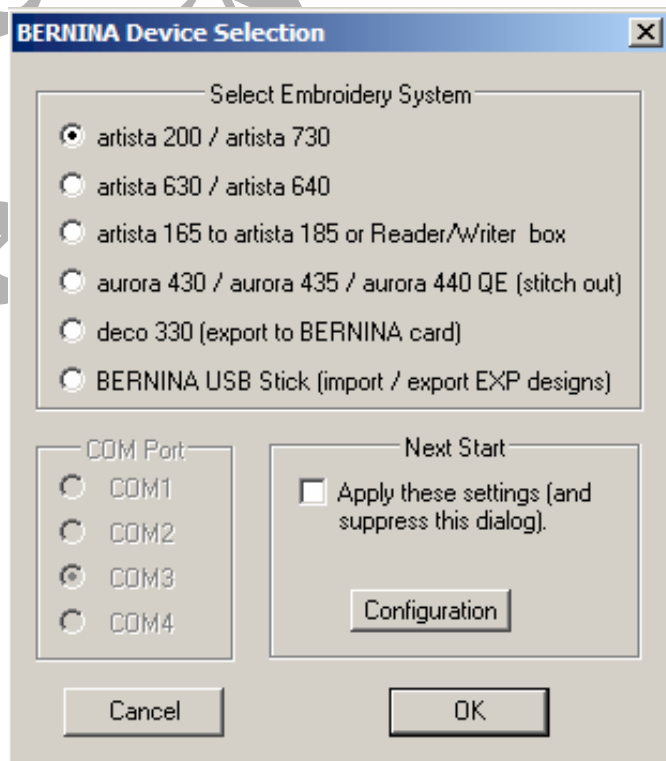
A dialogue box will open titled "BERNINA Device Selection".

Select Embroidery System: All the Bernina embroidery systems are listed.

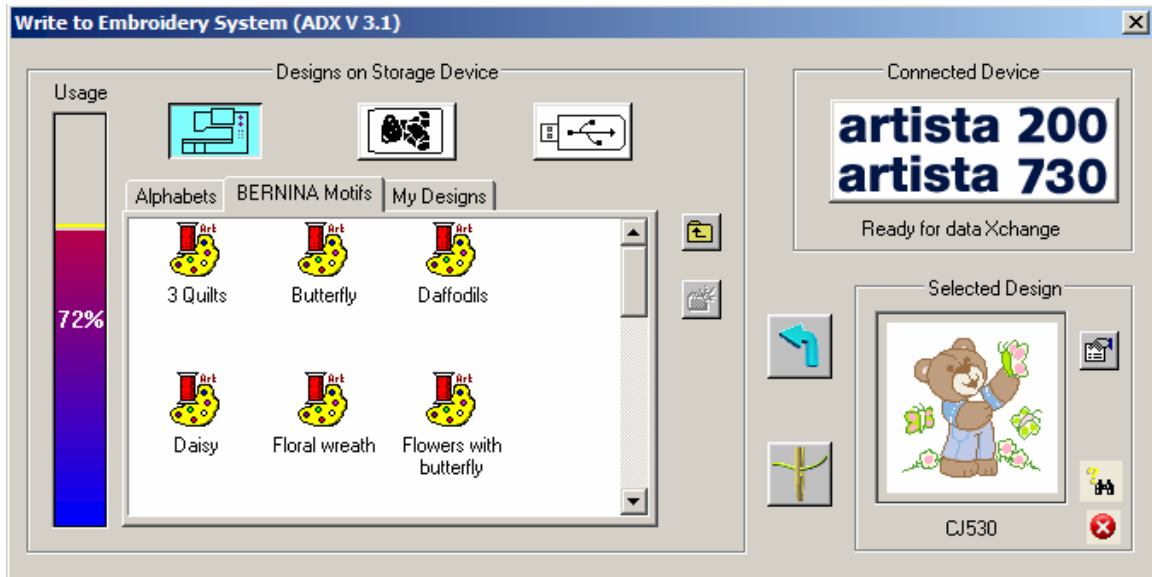
If you are using the software with another type of machine you would save the design in the desired format and then open through the transfer medium that you use for your brand.

Click the circle beside the machine you are planning to use.

The software will automatically format the design for the type of machine, embroidery card, or USB stick.




If you choose one of the first 4 choices the software will write the design directly to the embroidery unit. You will see this screen:



You have the choice of sending the design to the sewing machine to stitch out

one time  (design can be saved from the machine to other medium)

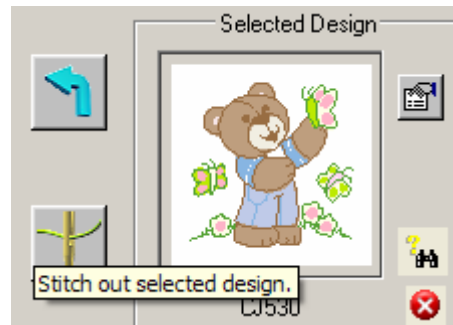
or saving the design  directly into the machine memory ,

embroidery card ,

or USB stick .

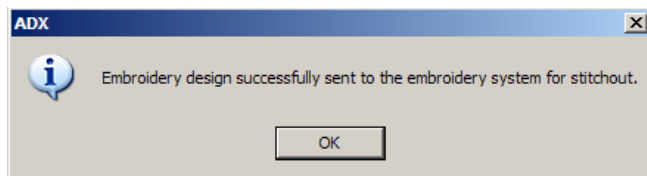
The memory card or USB stick would be placed in the machine prior to sending the design to the embroidery unit.

To send the design to the embroidery unit for a one time sew out: Click the needle symbol which means Stitch out selected design.

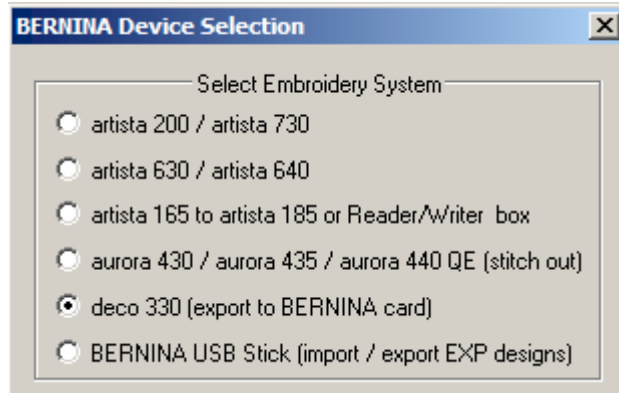


You will get a message telling you that the program is writing the files to the device.

Next you'll get the **ADX** screen indicating that the design has been successfully downloaded to the embroidery unit. You will see the design on the screen of your embroidery machine and see that it is ready to stitch.

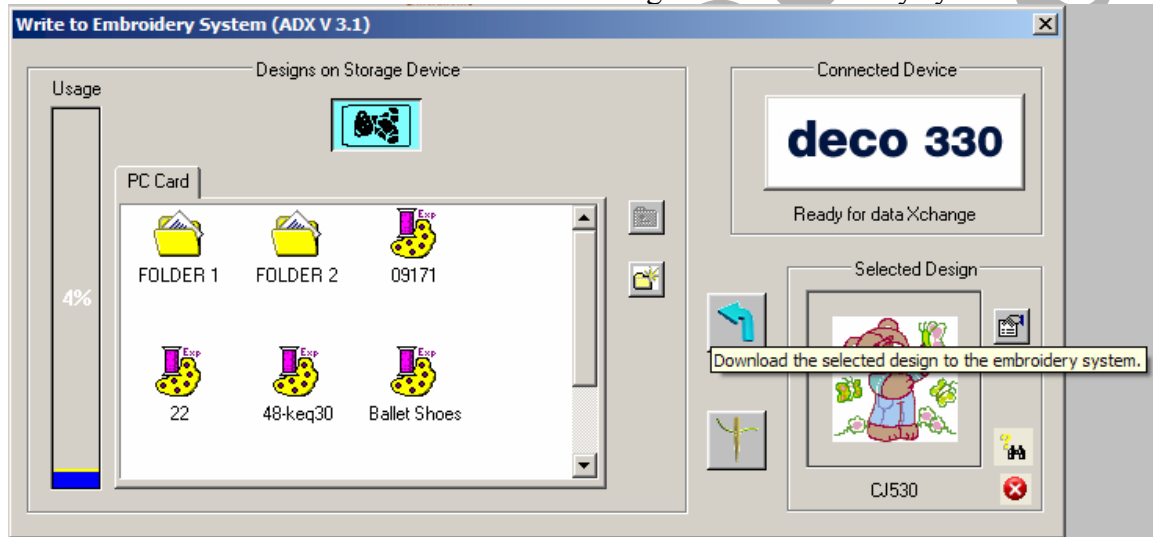


If you are using a **Deco 330** you would go through the same steps but you will place the Bernina personal design card in your laptop or a memory card reader/writer box. The new Bernina Deco 340 will use a USB stitch for design transfer as well as the artista personal design card.



Click the circle next to deco 330.
Click OK.

Place the Personal Memory Card or USB stick in your computer.
Click the Blue Arrow to download the selected design to the embroidery system.



The design will be converted to .exp format and downloaded to a EmbF5 folder on your memory card.



Size: 227 KB
Folders: FOLDER 2, FOLDER 1
Files: Ballet Shoes.EXP, 22.EXP, 22.INF, SZB Beach Baby.EXP, ...

To save a design to the machine memory:

Click the **Write to Machine** tool.

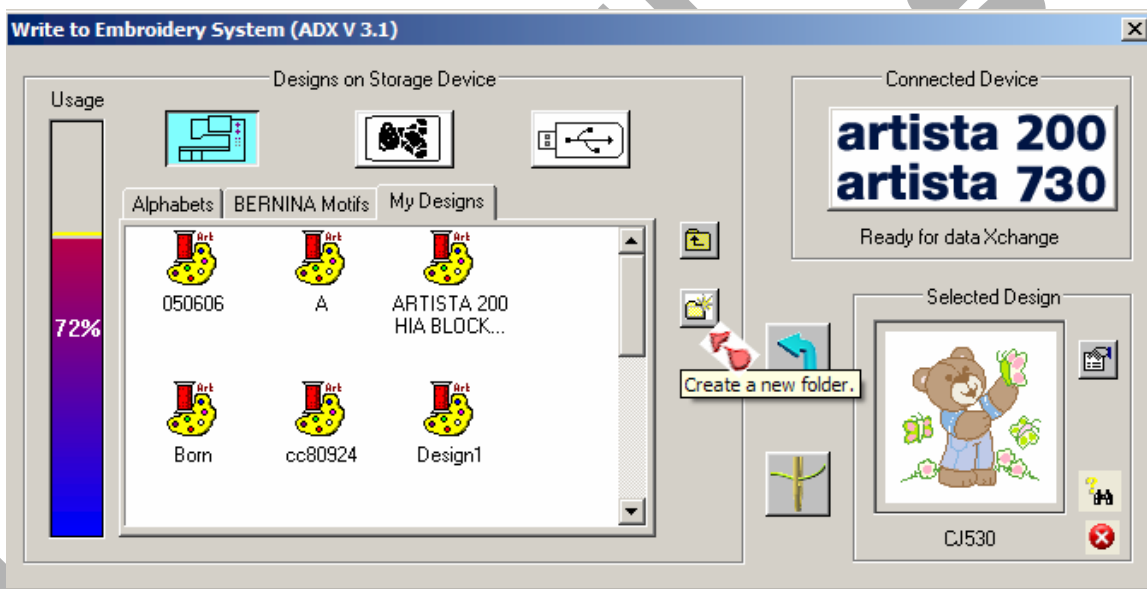
Select Embroidery System and select the machine where you are going to save the design.

Click the machine symbol. It will turn blue to show it is selected.



Click the **My Designs Tab** to bring it to the front. It's best to keep all your "extra" designs in this folder and leave the original machine designs in the Bernina Motifs Folder and the Alphabets Folder.

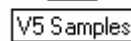
If you'd like to save the designs in a folder of their own, click the **Create a new folder** icon.



Right click on the New Folder and click **Rename**.
When the Folder name highlights,



type in V5 Samples
Press **Enter**.



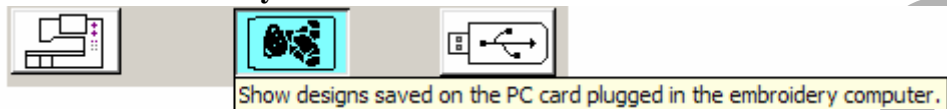
Click the **Download to the Embroidery System** icon.

To save a design to the PC embroidery card that is placed in the embroidery unit.

Click the **Write to Machine** tool.

Select Embroidery System and select the machine where you are going to save the design.

Click the PC card symbol.



Proceed with the same steps as saving to the machine memory.

To save a design to a USB stick that is place in the embroidery unit.

Select Embroidery System and select the machine where you are going to save the design.

Click the **Write to Machine** tool.

Click the USB symbol.



Proceed with the same steps as saving to the machine memory. New folders can be created if you want.

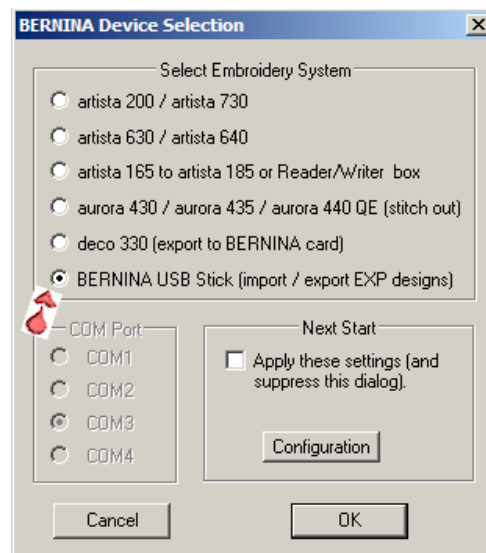
**If you choose to send the design directly to a USB Stick:
Place the USB stick in your computer.**

BERNINA Device Selection>Select Embroidery System>Bernina USB Stick (Import/export EXP designs).

Click the circle beside BERNINA USB Stick (import/export EXT designs).

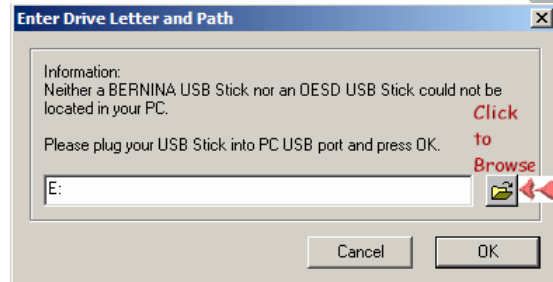
Click OK.


This choice saves the design in the EXP format which the Bernina sewing systems recognize.



If you have purchased a **Bernina USB Stick** or if you received a USB Stick with your Bernina 730 or Bernina 200 upgrade to 730 kit, then you will see this screen next.

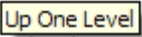
If you have a generic brand of USB stick that works with your Bernina (The brand SanDisk does), then the software won't automatically detect the USB drive and you will need to browse your computer to find the location of the generic USB stick.



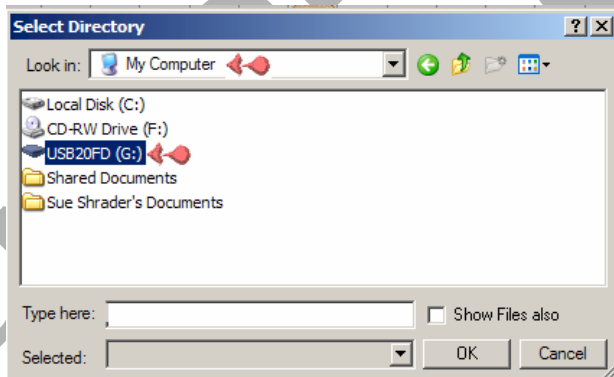
Click the open box  to browse.

In the **Select Directory** dialogue box go **Up One**



Level  until you find **My Computer**.

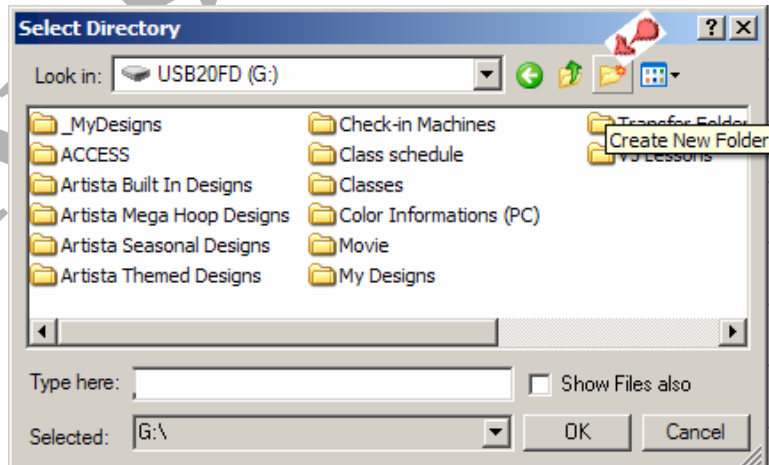
When My Computer Shows in the **Look in:** box you can locate your USB drive.



Click to select the drive. This drive could be D or E or F or G or whatever depending on the # of devices you have on your computer.

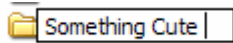
After choosing the USB drive, the USB drive will show in the **Look in:** box.

Click the **Create New Folder** icon and make a new folder.



When the box is blue and says **New Folder** you can immediately start typing in the name of the folder. If you have deselected the folder, you can right click on it and Click Rename to name the folder.

Name the folder something cute.



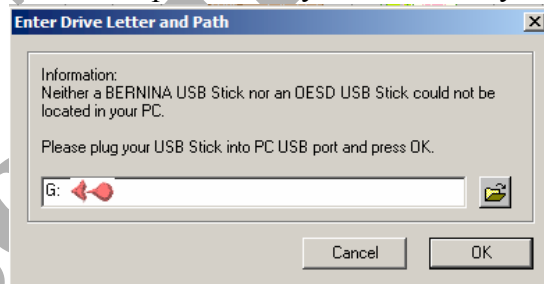
I'm kidding!

Give it a name and click the OK box.

This is the folder you will look for when the USB stick is placed into your embroidery system.

The drive "letter" will now show in the dialogue box.

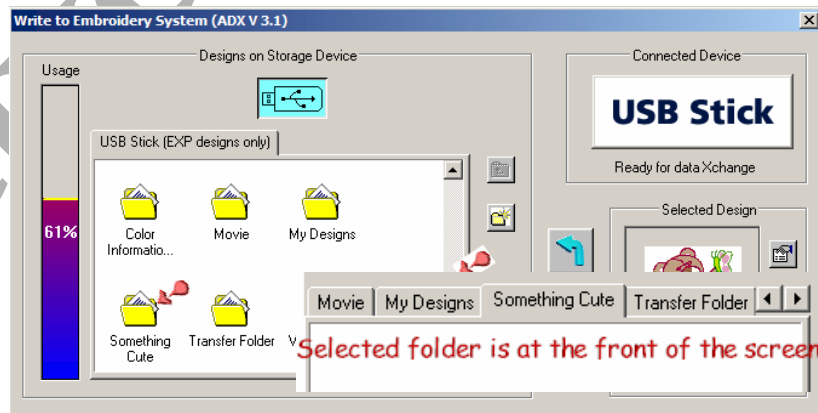
Click the OK box.



You are now ready to send the design to the folder you created on the USB drive.

Scroll to find your new folder. Double click on the folder.

The folder tab you chose will move to the front of the screen.

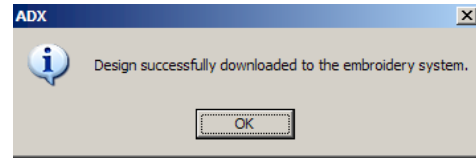


Click the **Download the selected design to the embroidery system** icon.



Download the selected design to the embroidery system.

The progress bar will show in the next box. You will then get the message “Design successfully downloaded to the embroidery system.”



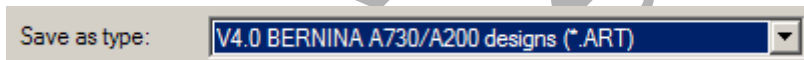
The USB stick now has your design saved in the .exp format and can be used in your embroidery system. Click OK.

Answer ID#405 in the FAQ's on the Bernina software support page will give you the directions for downloading their ADX manual into your V5 software.

http://berninasupport.custhelp.com/cgi-bin/berninasupport.cfg/php/enduser/fattach_get.php?p_sid=E_mymCqi&p_accessibility=0&p_tbl=9&p_id=405&p_created=1158698331&p_olh=0

Designs can also be saved in the correct format and placed directly on a USB stick through Windows Explorer.

The Bernina 730 and 200 (updated to 730), designs must be saved as V4.0 BERNINA A730/a200 designs (*.ART)



The Bernina 630 and 640 designs must be saved as Melco (*.EXP) format.



Use your computer skills to copy and paste the designs to your USB stick.